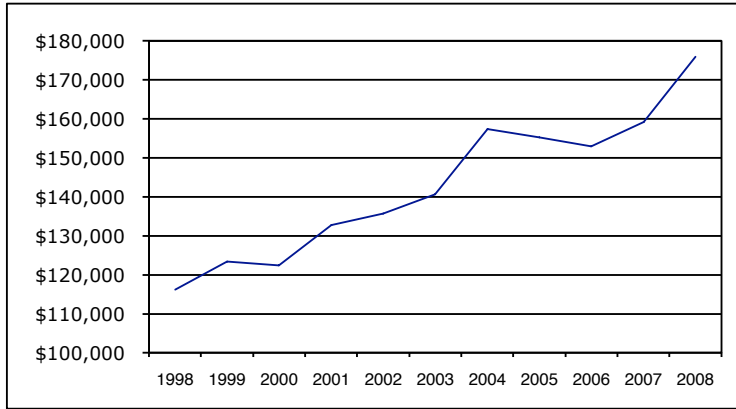


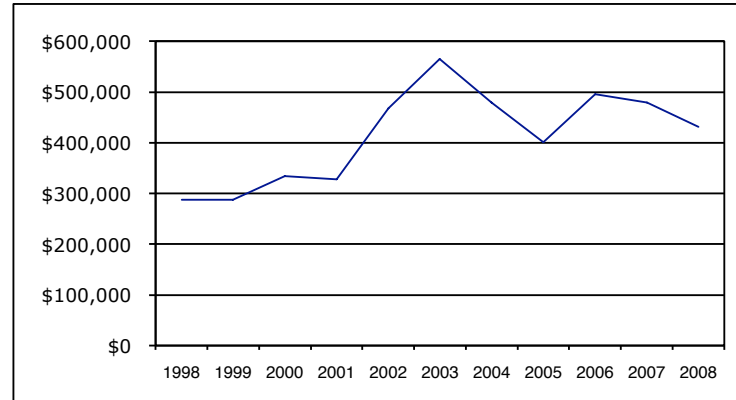
CHARTS

TINY TOWNSHIP OPERATING BUDGET, INFLATION-ADJUSTED
(previous years' expenditures have been restated as if purchased at this year's prices)

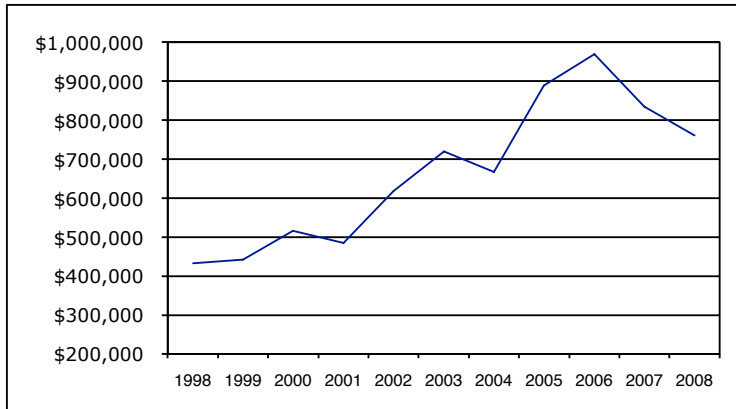
GENERAL GOVERNMENT



MAYOR AND COUNCIL



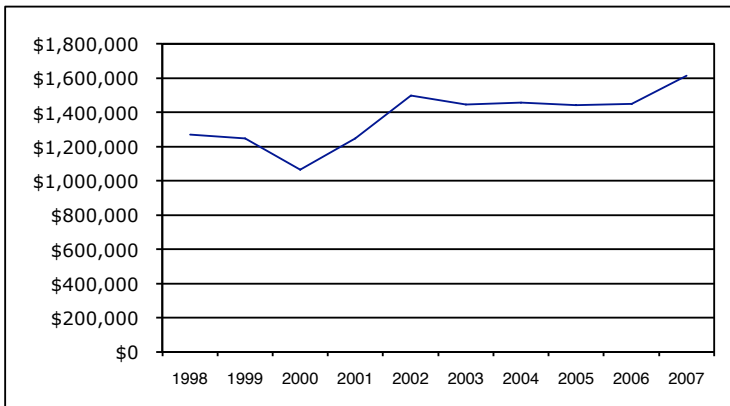
ADMINISTRATION



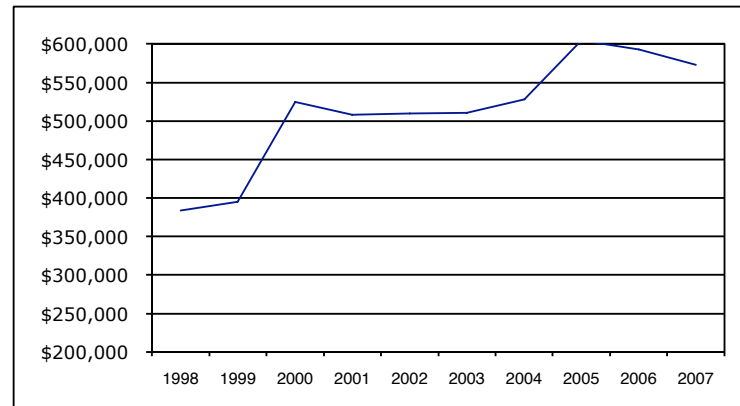
GENERAL GOVERNMENT - TOTAL

TINY TOWNSHIP OPERATING BUDGET, INFLATION-ADJUSTED
 (previous years' expenditures have been restated as if purchased at this year's prices)

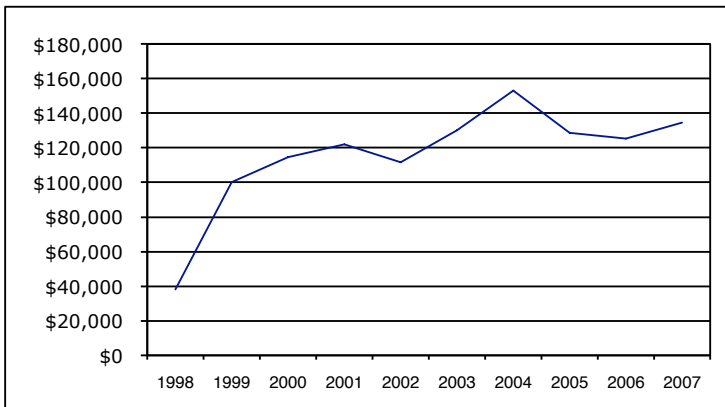
PUBLIC PROTECTION



POLICING

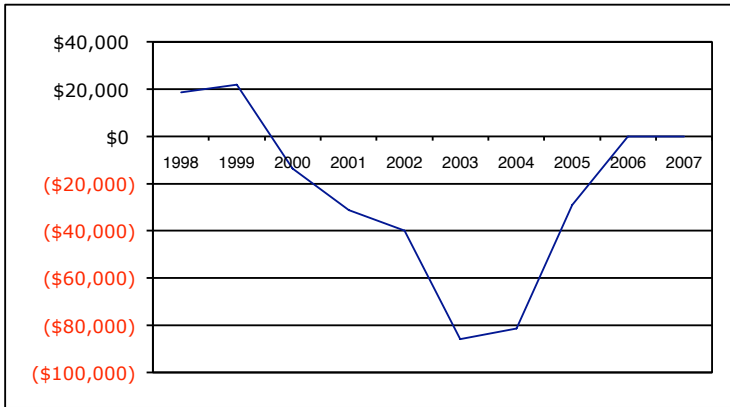


FIRE

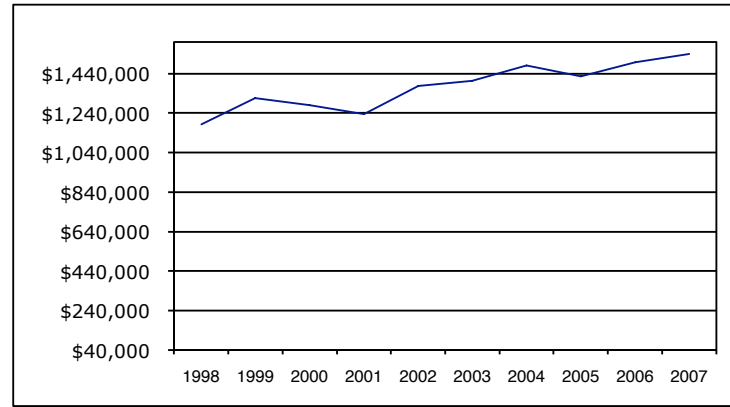


BYLAW ENFORCEMENT

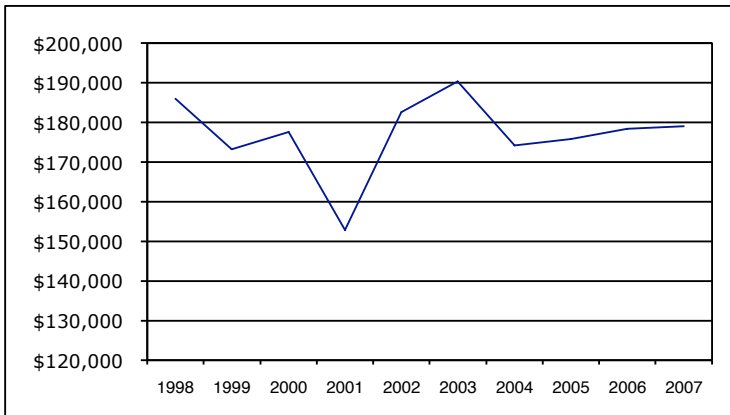
TINY TOWNSHIP OPERATING BUDGET, INFLATION-ADJUSTED
 (previous years' expenditures have been restated as if purchased at this year's prices)



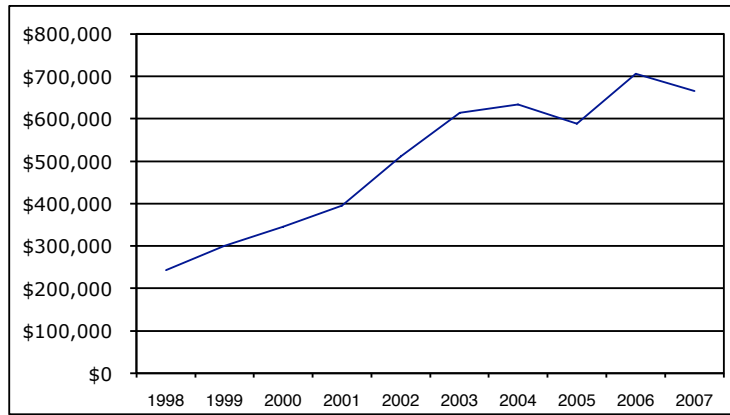
BUILDING



ROADS

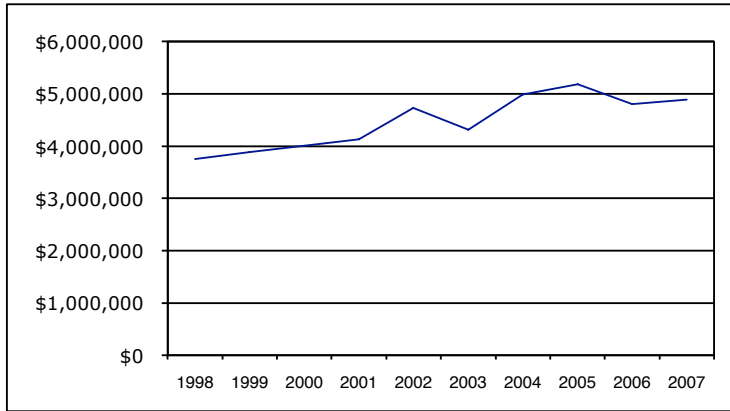


PLANNING + DEVELOPMENT

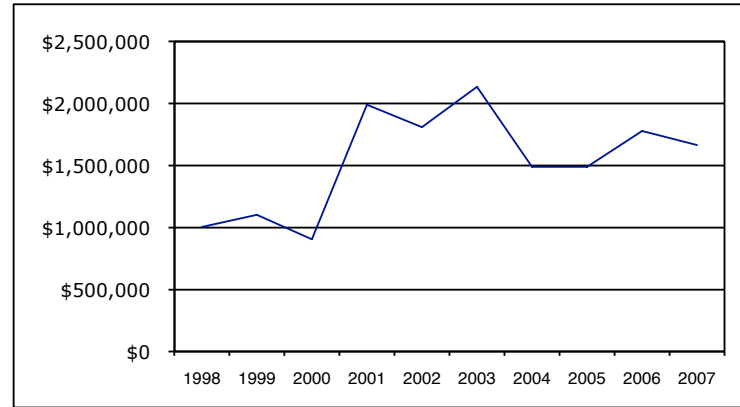


RECREATION + CULTURE

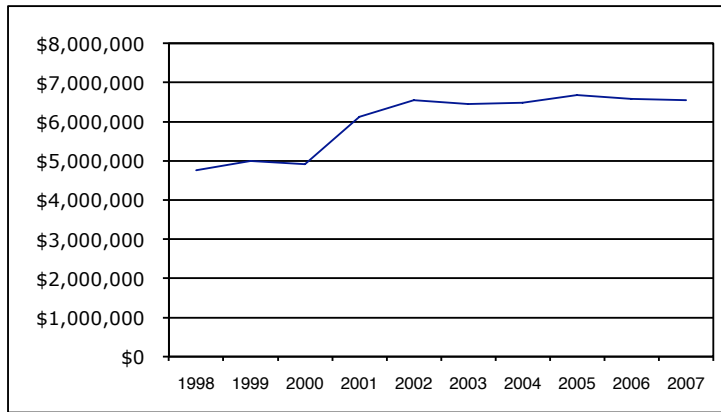
TINY TOWNSHIP BUDGET, INFLATION-ADJUSTED
 (previous years' expenditures have been restated as if purchased at this year's prices)



TOTAL OPERATING BUDGET



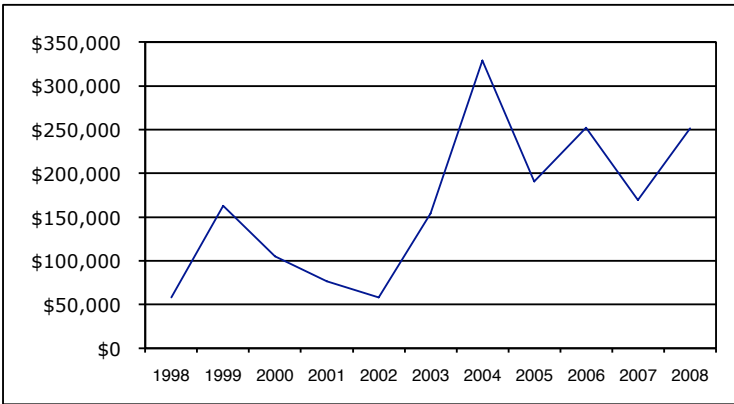
CAPITAL BUDGET NET OF RESERVES AND GRANTS



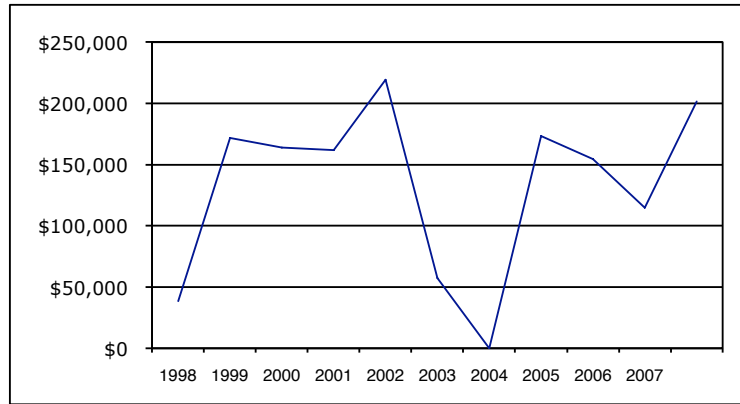
TOTAL TAX LEVY

TINY TOWNSHIP CAPITAL BUDGET, INFLATION-ADJUSTED

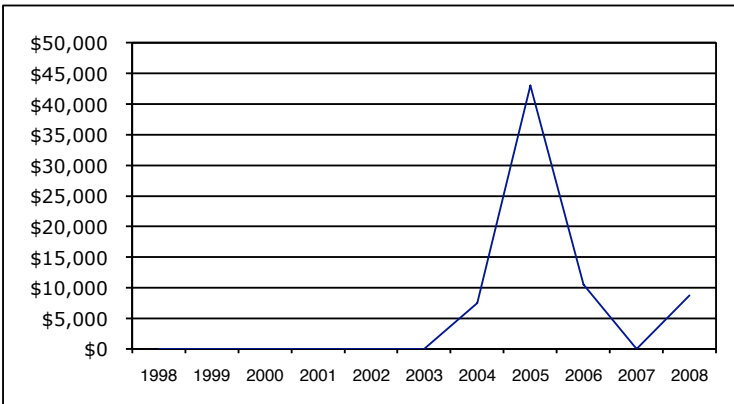
(previous years' expenditures have been restated as if purchased at this year's prices)



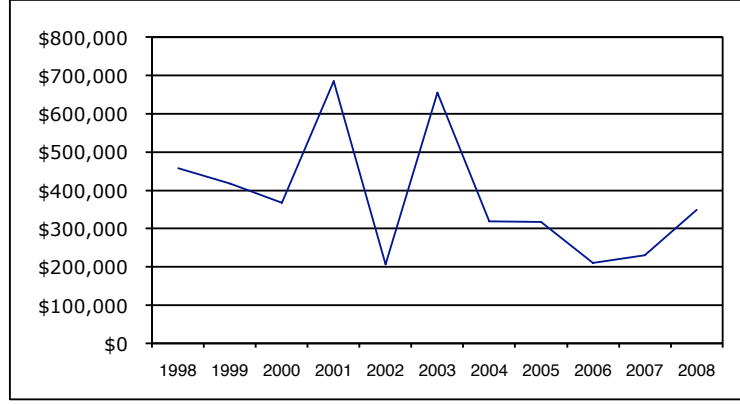
ADMINISTRATION



STUDIES AND CONSULTING

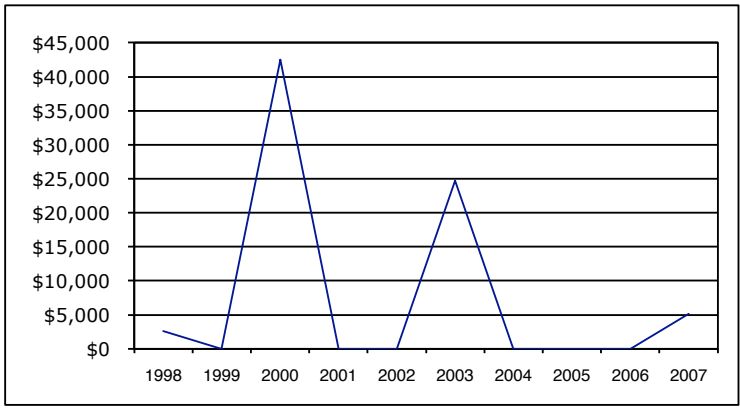


EMERGENCY PLANNING

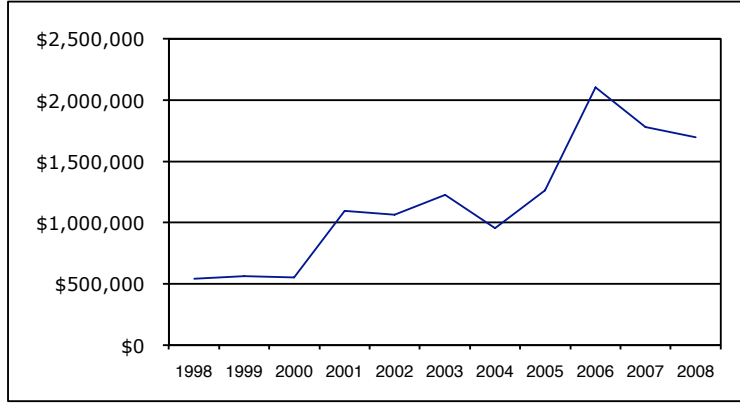


FIRE

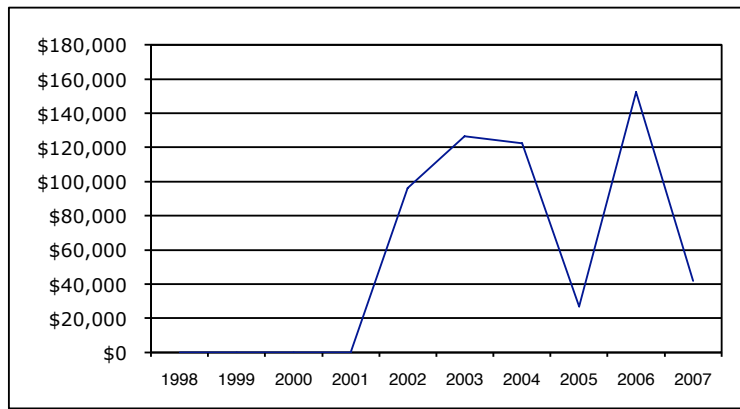
TINY TOWNSHIP CAPITAL BUDGET, INFLATION-ADJUSTED
 (previous years' expenditures have been restated as if purchased at this year's prices)



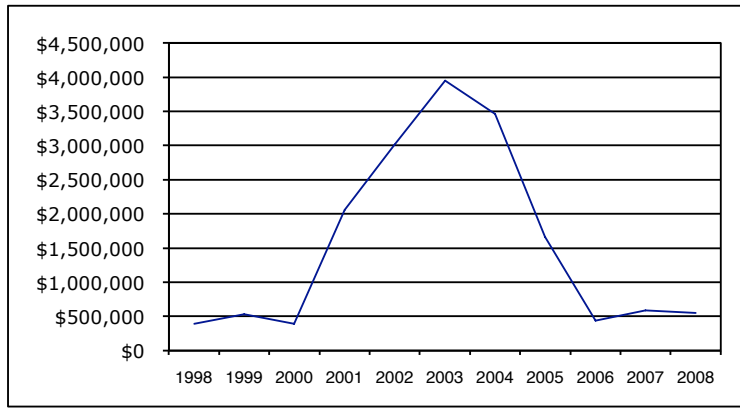
BUILDING



ROADS

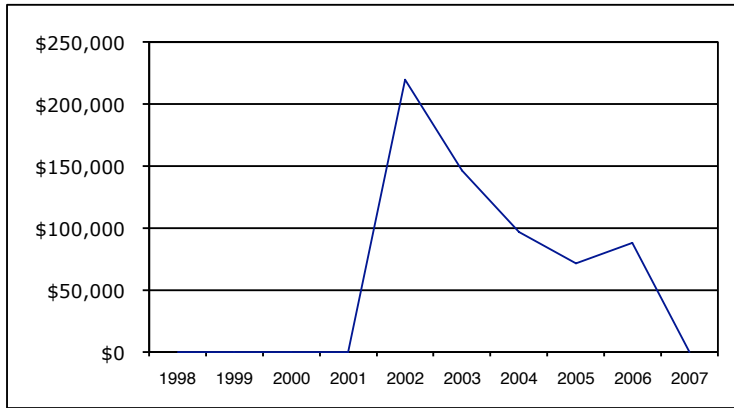


ENVIRONMENT

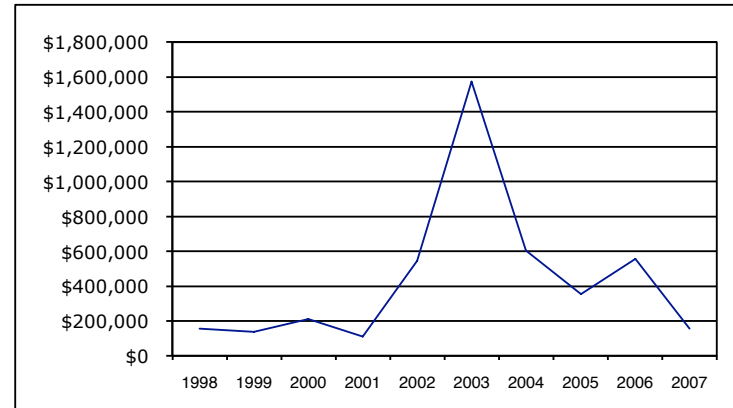


WATER

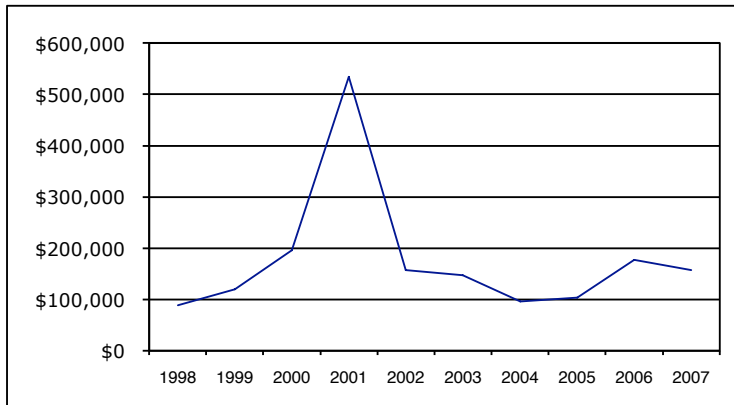
TINY TOWNSHIP CAPITAL BUDGET, INFLATION-ADJUSTED
 (previous years' expenditures have been restated as if purchased at this year's prices)



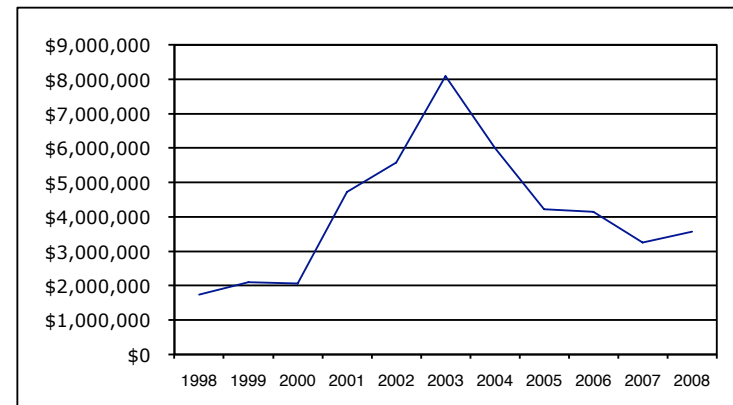
LEASED PARKS



PARKS

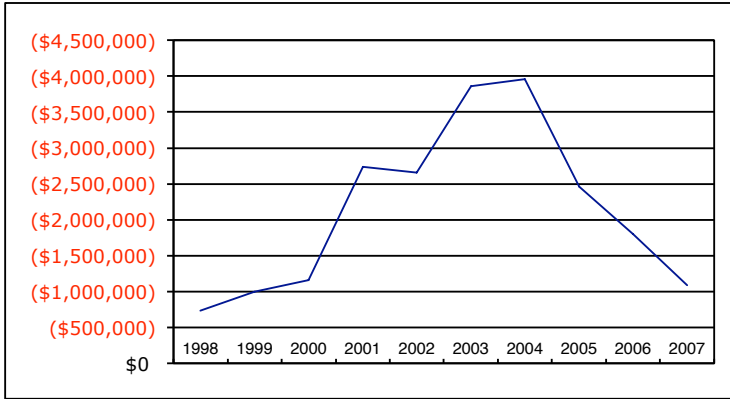


PLANNING

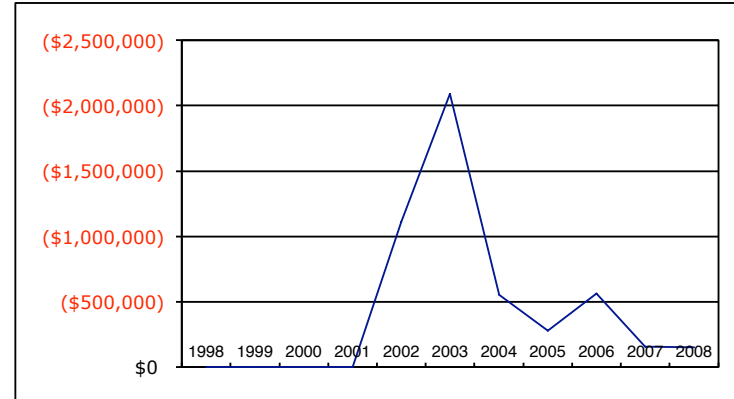


TOTAL CAPITAL BUDGET

TINY TOWNSHIP CAPITAL BUDGET, INFLATION-ADJUSTED
 (previous years' expenditures have been restated as if purchased at this year's prices)

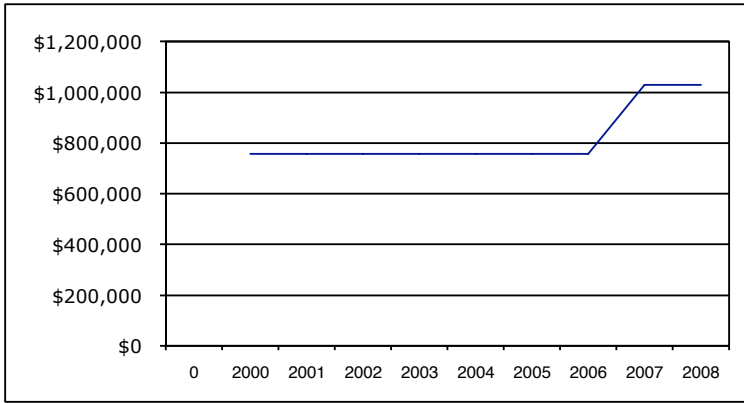


CAPITAL FINANCING FROM RESERVES

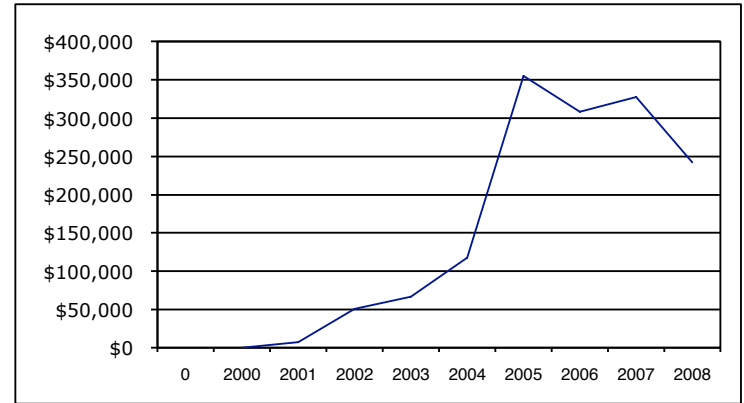


CAPITAL FINANCING FROM GRANTS

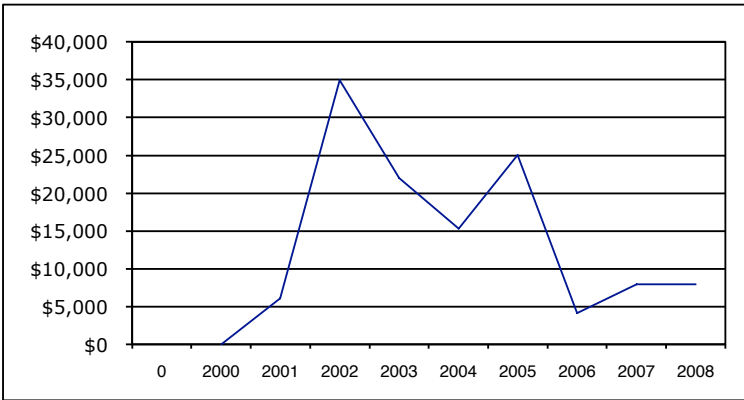
**TINY TOWNSHIP
RESERVE BALANCES, NOT INFLATION-ADJUSTED**



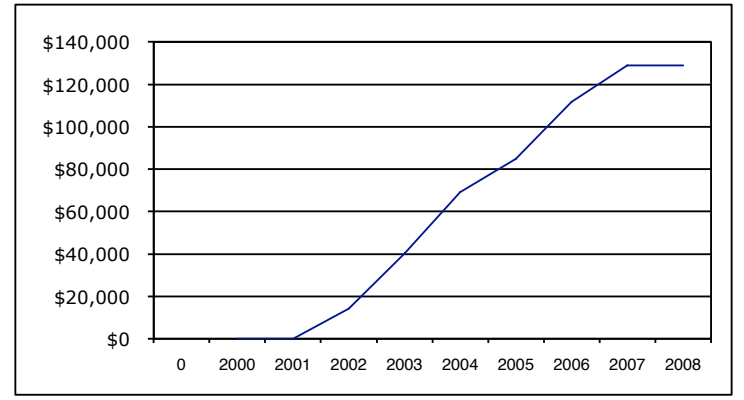
WORKING FUND RESERVE



WASTE DISPOSAL RESERVE

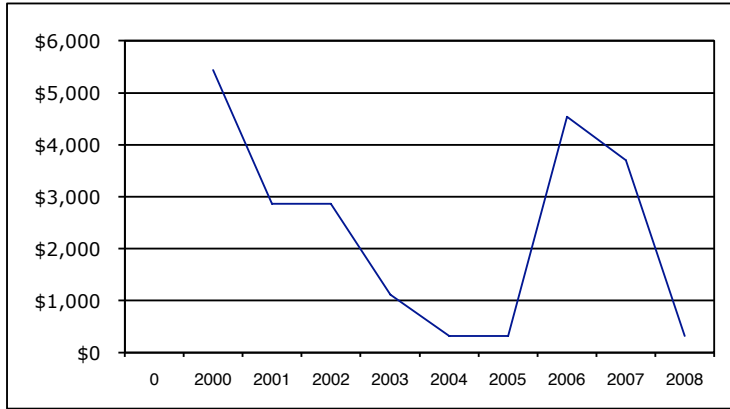


TINY TRAILS RESERVE

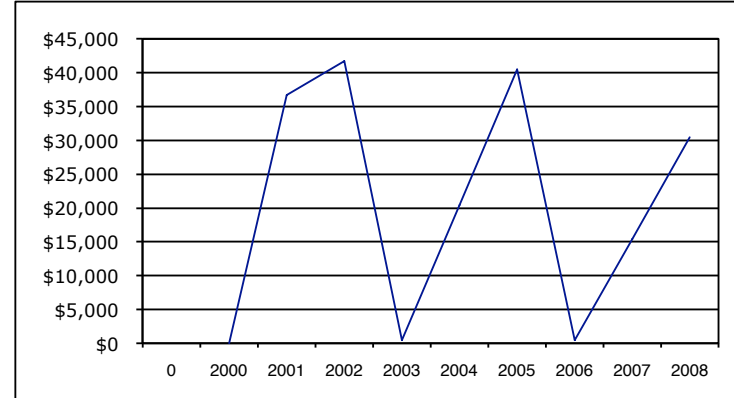


WSIB RESERVE

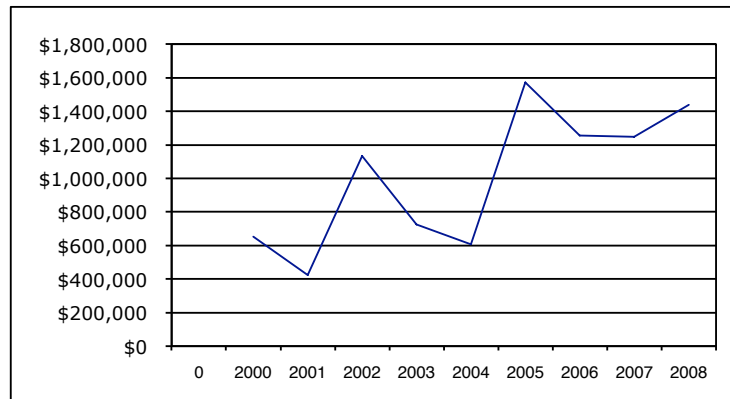
**TINY TOWNSHIP
RESERVE BALANCES, NOT INFLATION-ADJUSTED**



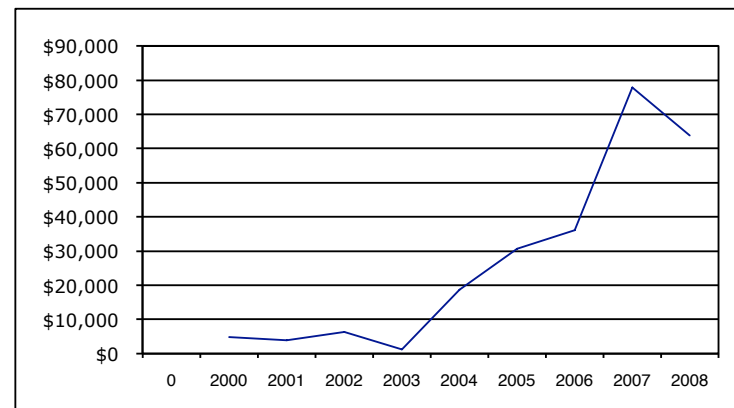
HISTORY BOOK RESERVE



ELECTION RESERVE

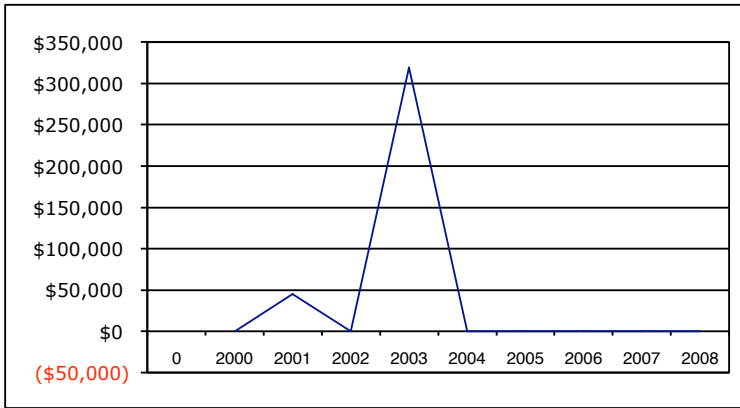


CAPITAL EXPENDITURE RESERVE

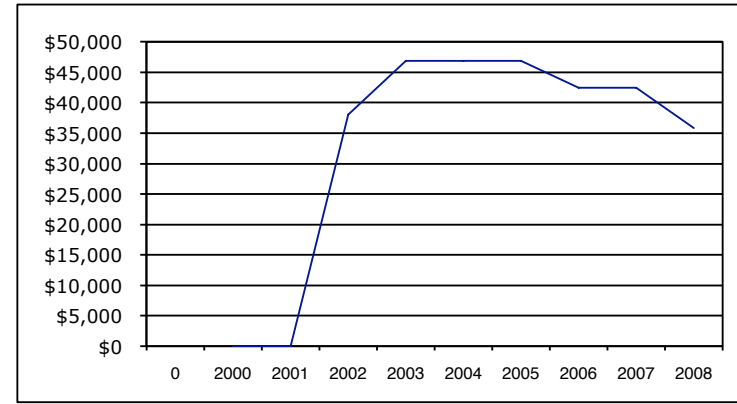


COMMUNITY ACCESS PROGRAM RESERVE

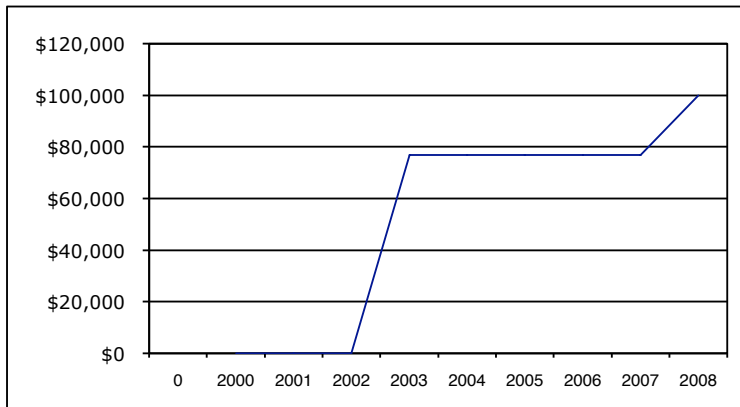
**TINY TOWNSHIP
RESERVE BALANCES, NOT INFLATION-ADJUSTED**



WATER RESERVE

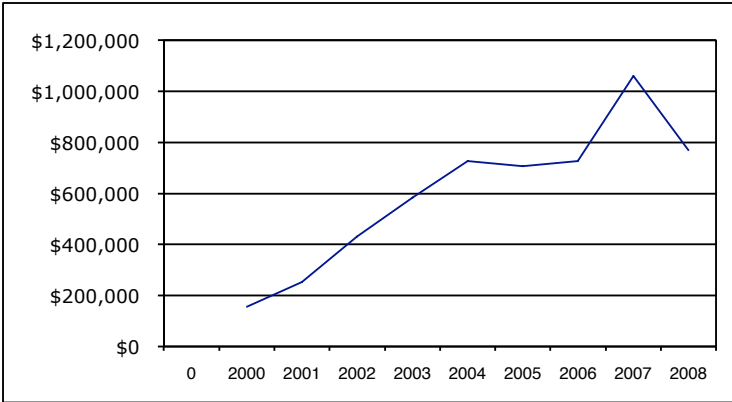


BEACH ENHANCEMENT RESERVE

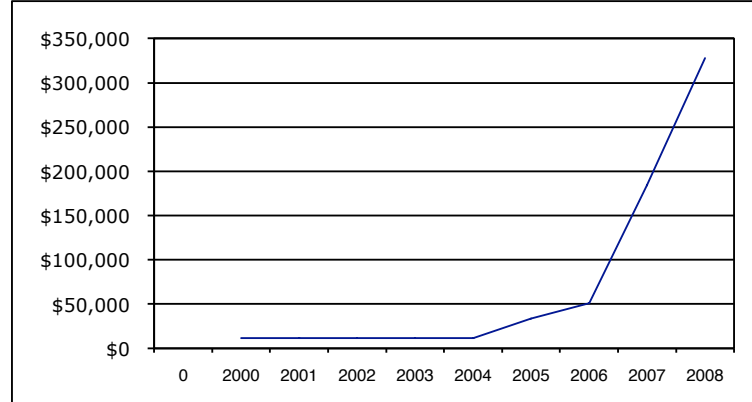


COMPUTER UPGRADE RESERVE

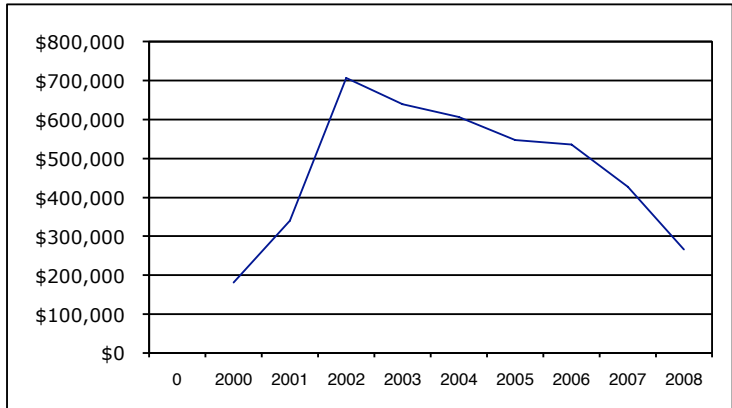
**TINY TOWNSHIP
RESERVE FUND BALANCES, NOT INFLATION-ADJUSTED**



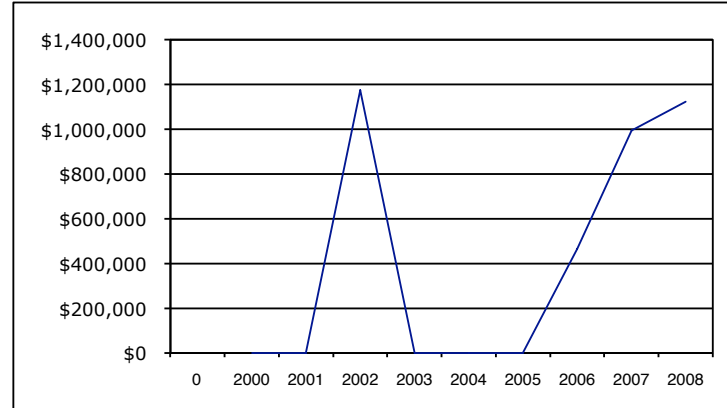
DEVELOPMENT CHARGES RESERVE FUND



EQUIPMENT REPLACEMENT RESERVE FUND

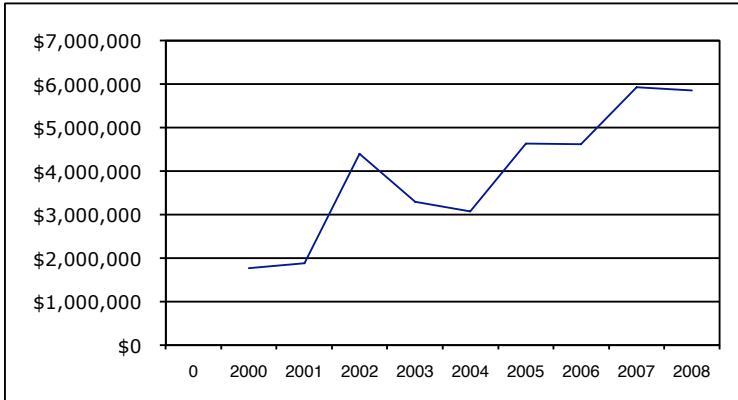


PARKLAND TRUST RESERVE FUND

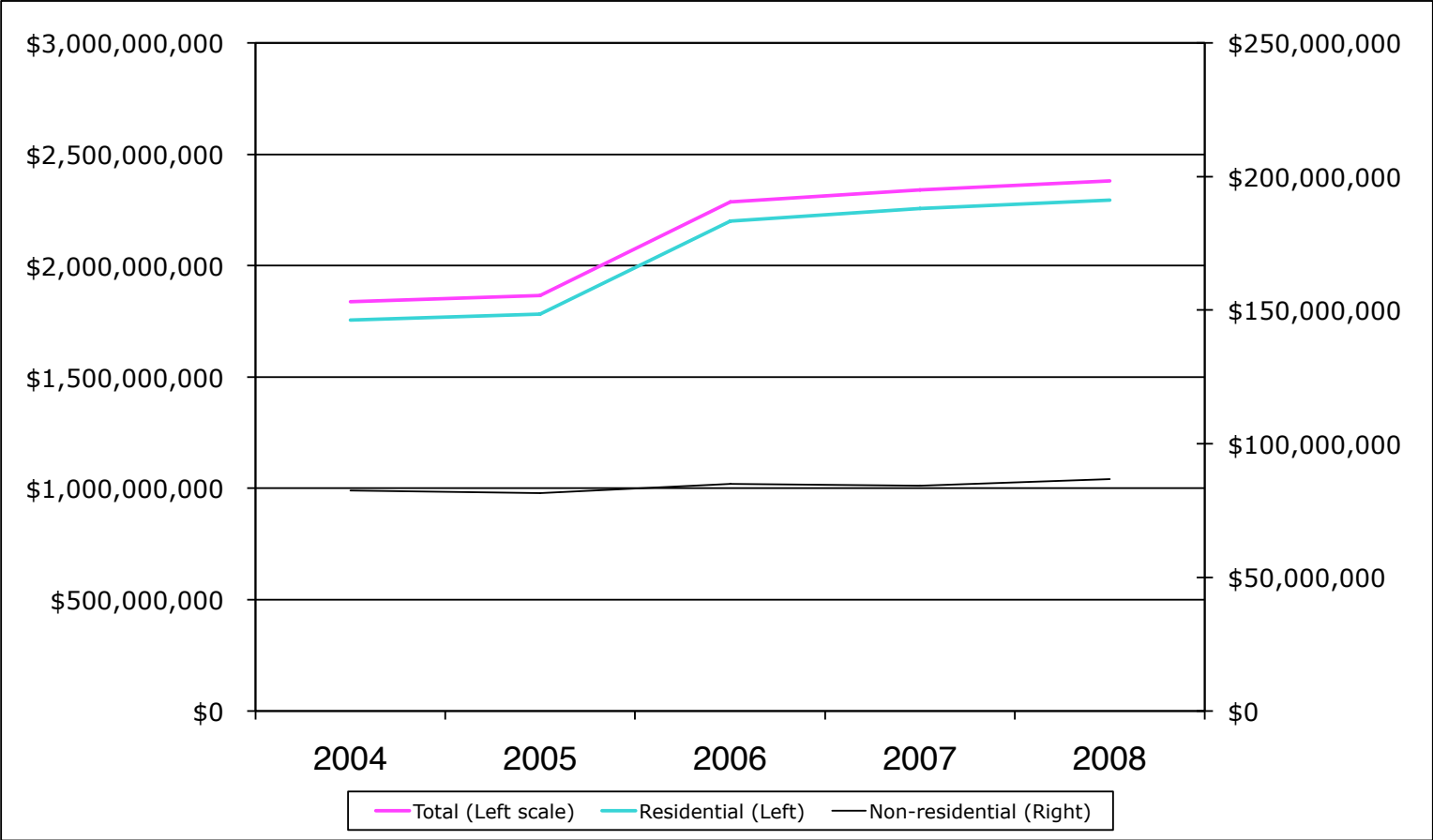


WATER RESERVE FUND

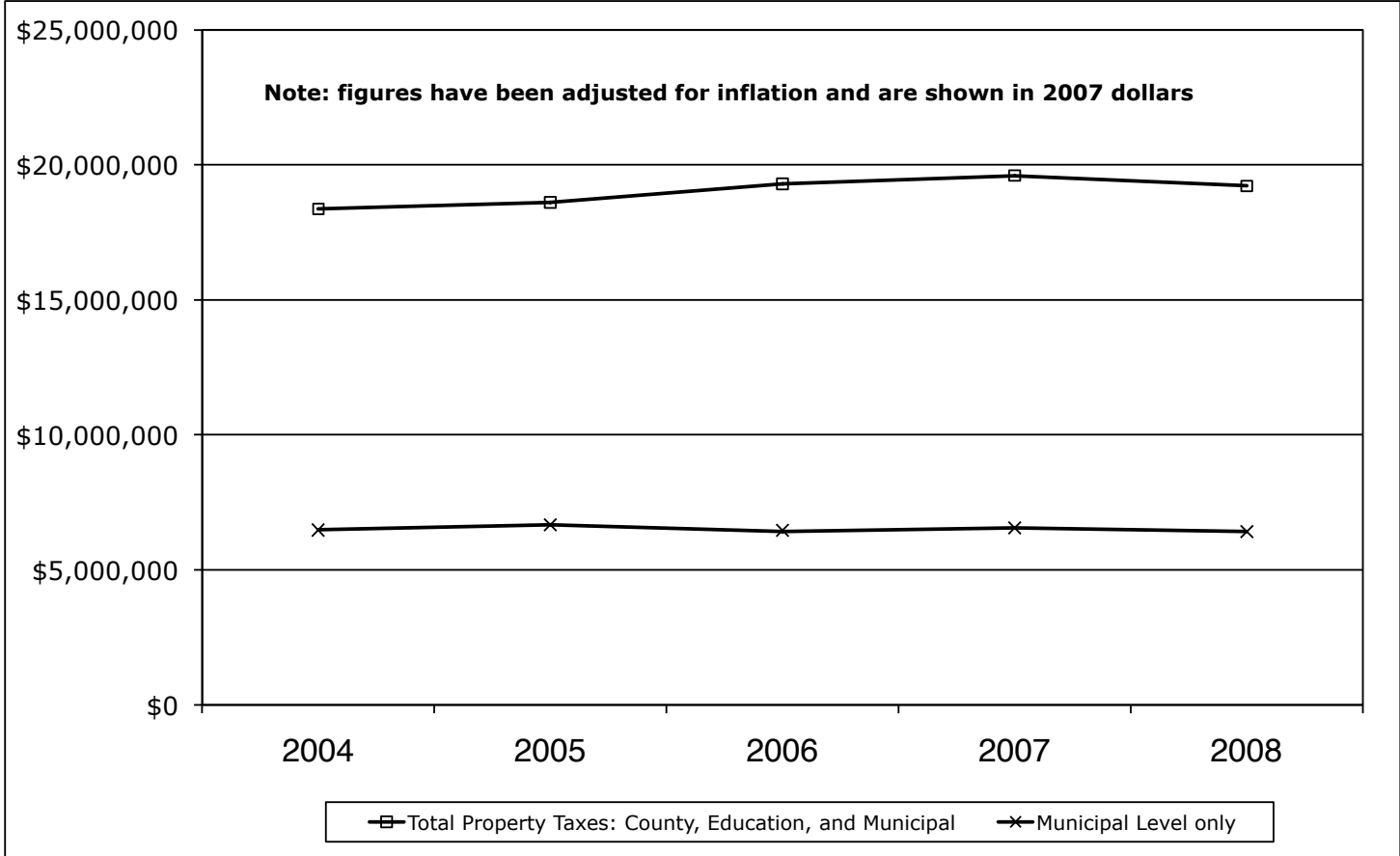
**TINY TOWNSHIP
RESERVE AND RESERVE FUND BALANCES, NOT INFLATION-ADJUSTED**



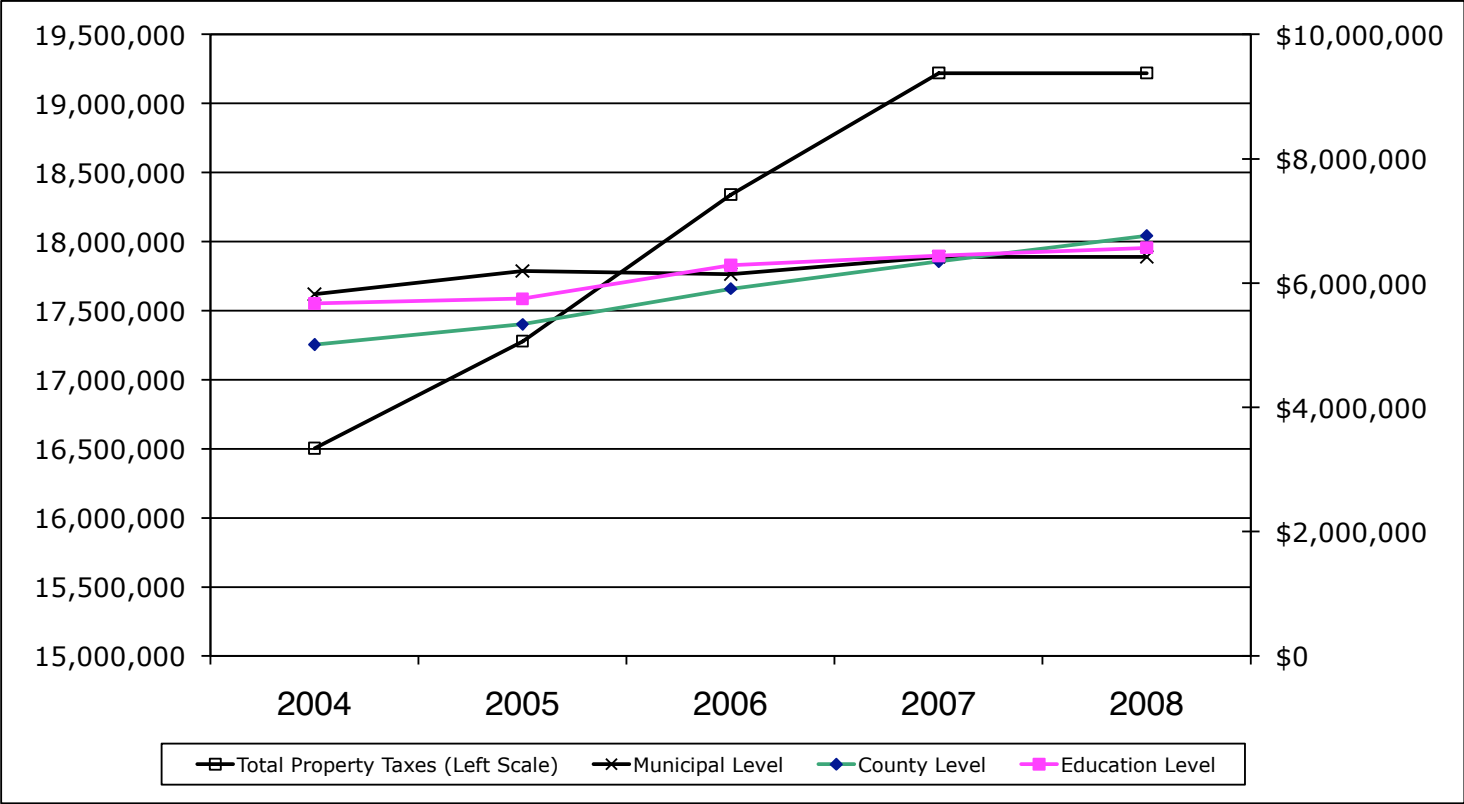
TOTAL RESERVES AND RESERVE FUNDS



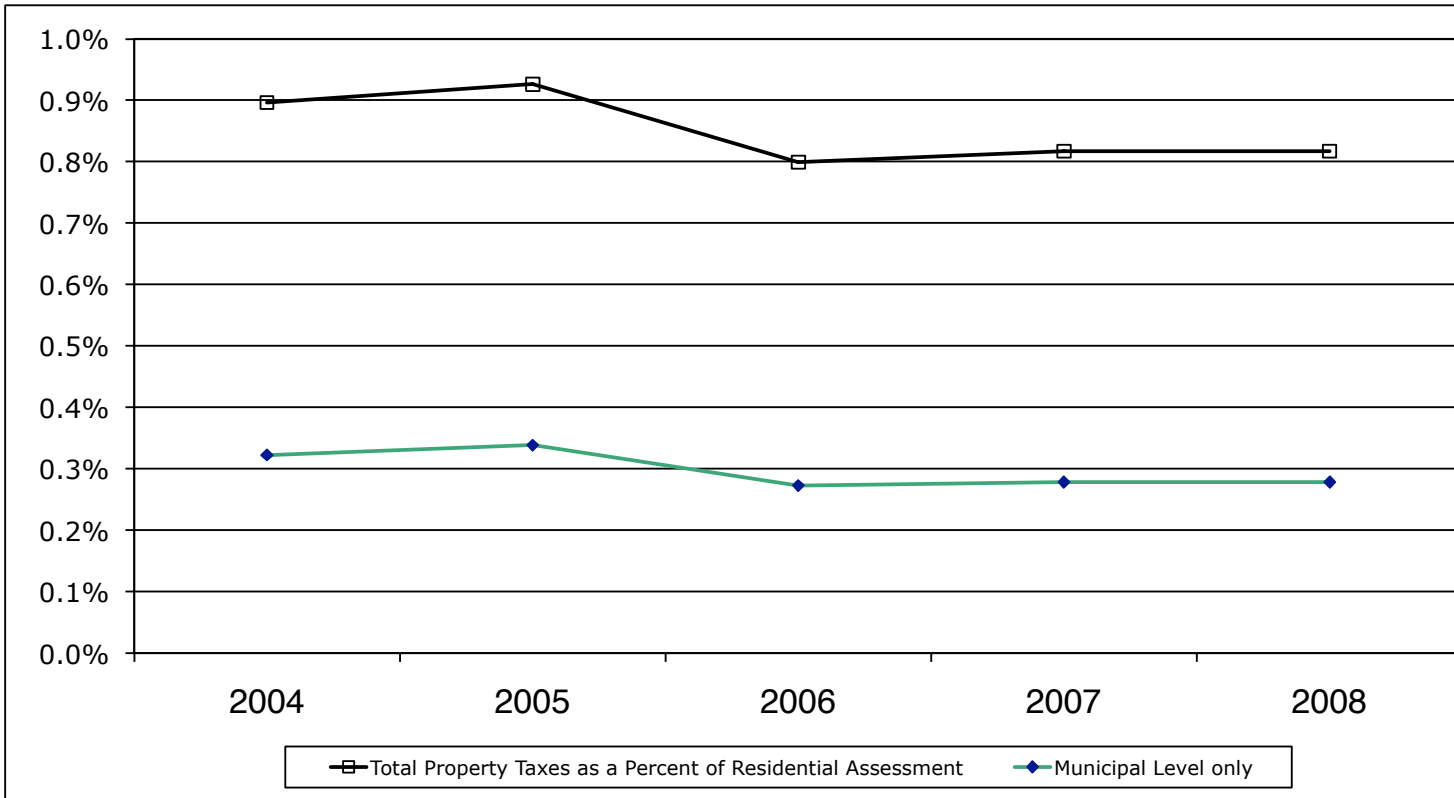
ASSESSED VALUE OF PROPERTIES IN TINY TOWNSHIP



PROPERTY TAXES PAID BY RESIDENTS OF TINY, ADJUSTED FOR INFLATION



PROPERTY TAXATION IN TINY, NOT ADJUSTED FOR INFLATION



PROPERTY TAXATION IN TINY AS A PERCENTAGE OF ASSESSED PROPERTY VALUE

